



GMT MONTHLY MEMBERSHIP PROGRESS REPORT

Results as of: 5/31/2020

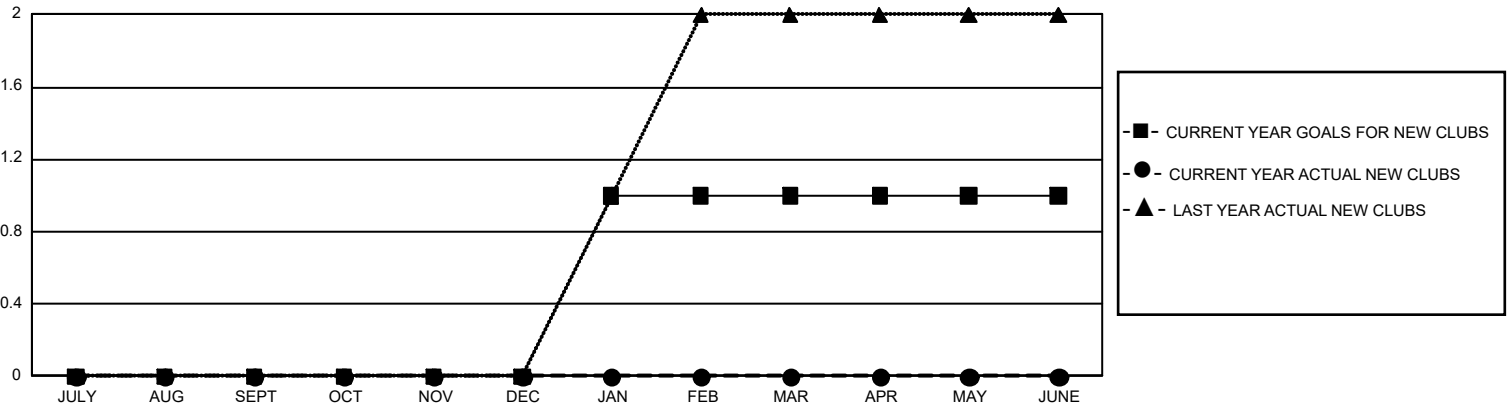
GMT Constitutional Area 3, Group I

GMT: OPEN

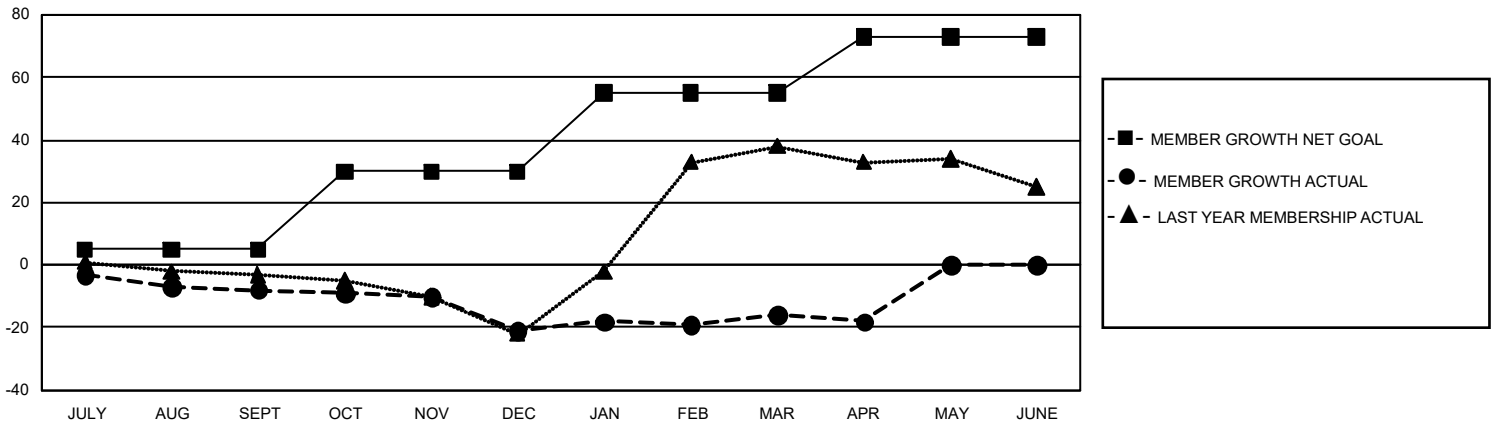
REPORT DOES NOT INCLUDE CLUBS IN UNDISTRICTED AREAS.

Clubs				Members			
RESULTS FOR 2019-2020				RESULTS FOR 2019-2020			
QUARTER	NEW CLUB GOAL	NEW CLUBS	DROPPED CLUBS	QUARTER	MEMBER GROWTH NET GOAL	MEMBER GROWTH ACTUAL	DROPPED MEMBERS ACTUAL (including transfers)
JULY/AUG/SEPT	0	0	0	JULY/AUG/SEPT	15	5	11
OCT/NOV/DEC	0	0	0	OCT/NOV/DEC	75	5	17
JAN/FEB/MAR	3	0	0	JAN/FEB/MAR	75	10	4
APR/MAY/JUNE	0	0	0	APR/MAY/JUNE	54	1	3

GOALS AND ACTUAL NEW CLUBS CUMULATIVE



GOALS AND ACTUAL MEMBERS CUMULATIVE



DROPPED CLUBS: 0	11 CLUBS OF 36 ADDED 1 OR MORE NEW MEMBERS	<u>GENDER DISTRIBUTION</u>	
<u>DROPPED MEMBERS</u>		MALE	303 (47.49%)
DECEASED	6	FEMALE	335 (52.51%)
CLUB CANCELLED	0	TOTAL FAMILY UNIT MEMBERS	9
OTHER	29	FAMILY MEMBERS PAYING HALF DUES	5
TOTAL	35		

[CLICK HERE FOR CUMULATIVE MEMBERSHIP DATA](#)